

## Base plate connector clamps

Aluminium

### SPECIFICATION

#### Identification No.

No. **2**: with Stainless Steel-Clamping screw DIN 912

Aluminium

plastic coated  
black, RAL 9005, textured finish **SW**

blank  
matt shot-blasted **BL**

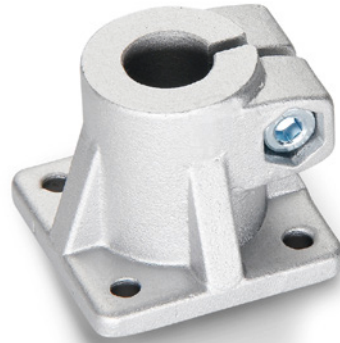
Clamping bores mechanically machined

Socket cap screws DIN 912

Stainless Steel AISI 304

Hexagon nuts DIN 985

Stainless Steel AISI 304



### INFORMATION

The clamping bores of GN 163 base plate connector clamps are mechanically machined and specially designed for construction tubes GN 990 (see page 1902) or DIN 2391, DIN 2395 and DIN 2462 respectively.

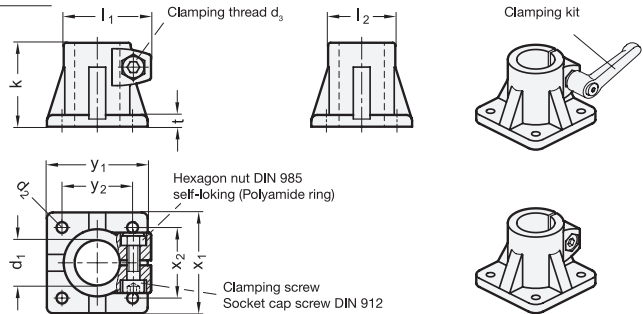
The standard version of the clamping screw is a socket cap screw with hexagonal socket DIN 912. It can be replaced by a clamping kit GN 911 (see page 1874) (article code see table of dimensions).

### ACCESSORY

- Clamping kit GN 911 (see page 1874)

### TECHNICAL INFORMATION

- Stainless Steel characteristics (see page A26)



\* Complete with colour index of the Base plate connector clamps (SW or BL)

**SW**  
RAL9005

**BL**  
blank

### GN 163

Description	d1	k	d2	d3	l1	l2	t	x1	x2	y1	y2	Clamping kits for d3	⚖
GN 163-B20-50-2-*	B 20	50	6,5	M 8	52	40	7	60	42	60	42	GN 911-M8-32	199
GN 163-B25-50-2-*	B 25	50	6,5	M 8	52	40	7	60	42	60	42	GN 911-M8-32	176
GN 163-B30-50-2-*	B 30	50	6,5	M 8	52	40	7	60	42	60	42	GN 911-M8-32	149
GN 163-B30-70-2-*	B 30	70	8,5	M 10	68	56	10	90	64	90	64	GN 911-M10-40	510
GN 163-B32-70-2-*	B 32	70	8,5	M 10	68	56	10	90	64	90	64	GN 911-M10-40	505
GN 163-B35-70-2-*	B 35	70	8,5	M 10	68	56	10	90	64	90	64	GN 911-M10-40	485
GN 163-B40-70-2-*	B 40	70	8,5	M 10	68	56	10	90	64	90	64	GN 911-M10-40	437
GN 163-B40-85-2-*	B 40	85	11	M 10	77,5	65	14	105	74	105	74	GN 911-M10-55	850
GN 163-B42-85-2-*	B 42	85	11	M 10	77,5	65	14	105	74	105	74	GN 911-M10-55	829
GN 163-B45-85-2-*	B 45	85	11	M 10	77,5	65	14	105	74	105	74	GN 911-M10-55	775
GN 163-B48-85-2-*	B 48	85	11	M 10	77,5	65	14	105	74	105	74	GN 911-M10-55	740
GN 163-B50-85-2-*	B 50	85	11	M 10	77,5	65	14	105	74	105	74	GN 911-M10-55	710
GN 163-B60-100-2-*	B 60	100	11	M 10	92	80	14	125	89	125	89	GN 911-M10-55	910

Weight BL

